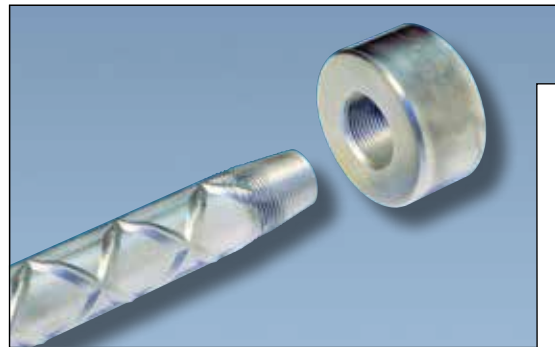
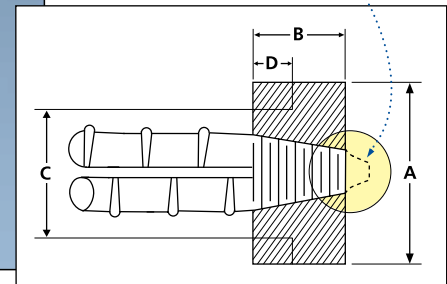


Features

- Replaces conventional hooked rebar
- Simplifies bar placement and lowers placing costs
- Permits rebar to be added without increasing the size of the components embedded in the concrete
- Reduces rebar congestion
- Provides greater design flexibility
- Exceeds ACI®, UBC and IBC® full-tension splice requirements
- Exceeds Type 1 and Type 2 splice requirements
- Head area meets or exceeds 5x rebar area
- Complies with ASTM® A970



NOTE: Bar tip may be +/- 2 threads from LENTON TERMINATOR face



Description

The LENTON TERMINATOR is an oversized coupling device secured to one end of a length of reinforcing steel. The connection utilizes the LENTON taper-threaded system. LENTON TERMINATOR requires approximately four revolutions to fasten to the bar and tightens using a standard pipe wrench. The reinforcing steel is purchased pre-threaded at a local rebar fabrication shop. Contact Pentair for your nearest supplier.

Splice Performance

The assembled connection is capable of exceeding the ACI®, UBC, A970, and IBC® Building Code requirements for full tension mechanical splices. The embedment length and pull-out strengths shall be determined by the structural engineer. For a copy of the ICC-ES ER-3967 or IAPMO®-ES ER-0188 reports, please visit www.erico.pentair.com.

Typical Applications

New Reinforced Concrete Construction:

- Minimizes congestion created by bent sections of reinforcing steel.
- Reduces the embedment length of reinforcing steel.

Bar Size	Part No.	"A" Dia.	"B" Dim.	"C" Dia.	"D" Dim.	Weight	Qty/Box	Ends/Chaser*
#4	EL12D6	1 - 3/8	9/16	N/A	N/A	0.2	150	400
#5	EL16D6	1 - 1/2	7/8	N/A	N/A	0.4	125	400
#6	EL20D6	1 - 7/8	1 - 1/8	N/A	N/A	0.8	50	360
#7	EL22D6	2	1 - 1/4	N/A	N/A	1.0	40	330
#8	EL25D6	2 - 1/4	1 - 3/8	N/A	N/A	1.3	30	300
#9	EL28D6	2 - 3/4	1 - 1/2	N/A	N/A	2.2	20	280
#10	EL32D6	3	1 - 9/16	N/A	N/A	2.7	15	250
#11	EL36D6	3 - 1/4	1 - 11/16	N/A	N/A	3.4	10	230
#14	EL43TD6	4	2 - 1/8	3	1	4.9	8	220
#18	EL57TD6	5 - 1/8	2 - 3/4	3	1	9.8	4	180

*Approximate

WARNING

Pentair products shall be installed and used only as indicated in Pentair's product instruction sheets and training materials. Instruction sheets are available at www.erico.pentair.com and from your Pentair customer service representative. Improper installation, misuse, misapplication or other failure to completely follow Pentair's instructions and warnings may cause product malfunction, property damage, serious bodily injury and/or death, and void your warranty.

ACI is a registered trademark of the American Concrete Institute. ASTM is a registered trademark of the American Society for Testing and Materials. IAPMO is a registered trademark of the International Association of Plumbing & Mechanical Officials. IBC is a registered trademark of the International Code Council, Inc.

© 2009, 2012, 2015 Pentair All Rights Reserved

Pentair, CADDY, CADWELD, CRITEC, ERICO, ERIFLEX, ERITECH and LENTON are owned by Pentair or its global affiliates. All other trademarks are the property of their respective owners. Pentair reserves the right to change specifications without prior notice.